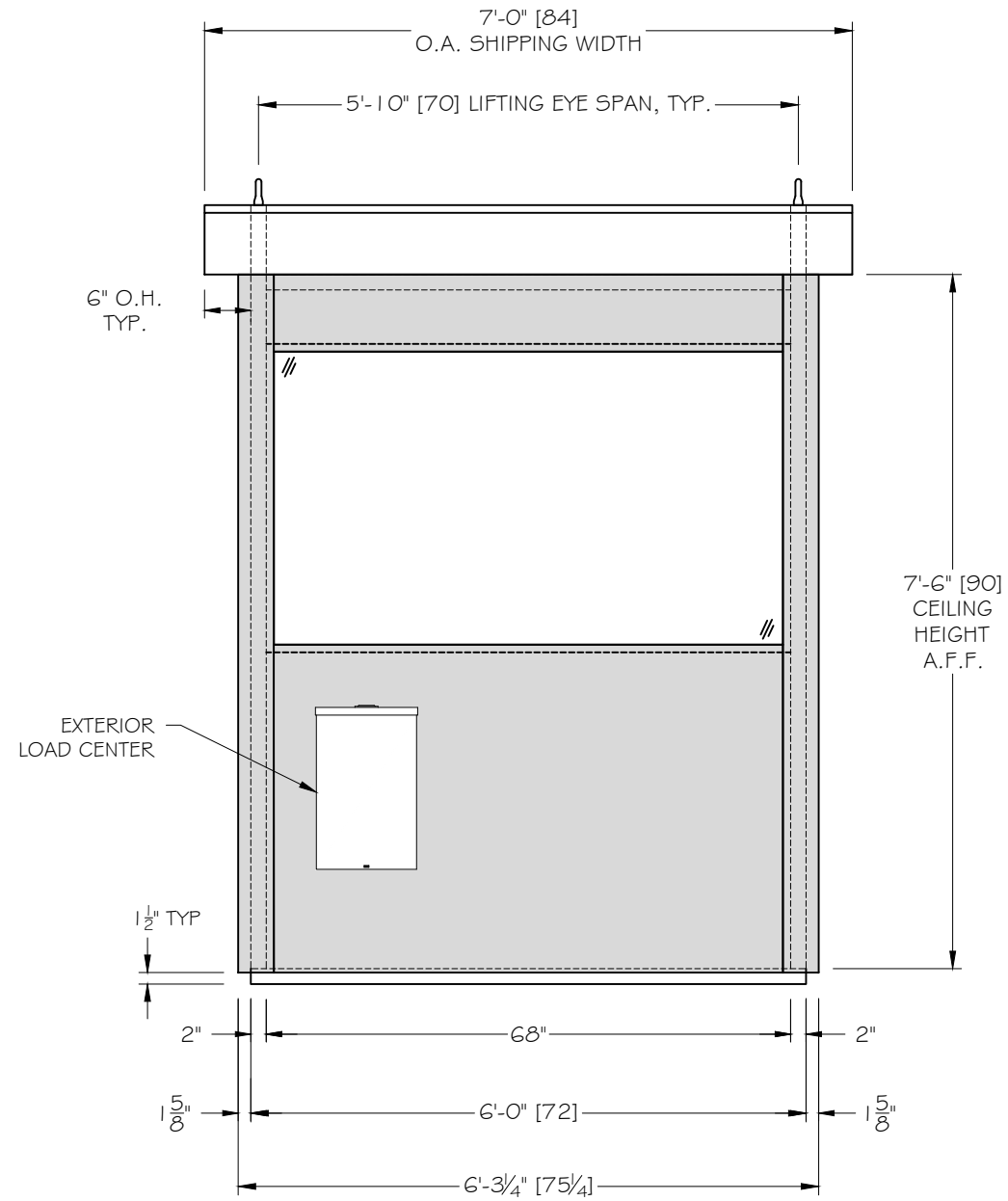
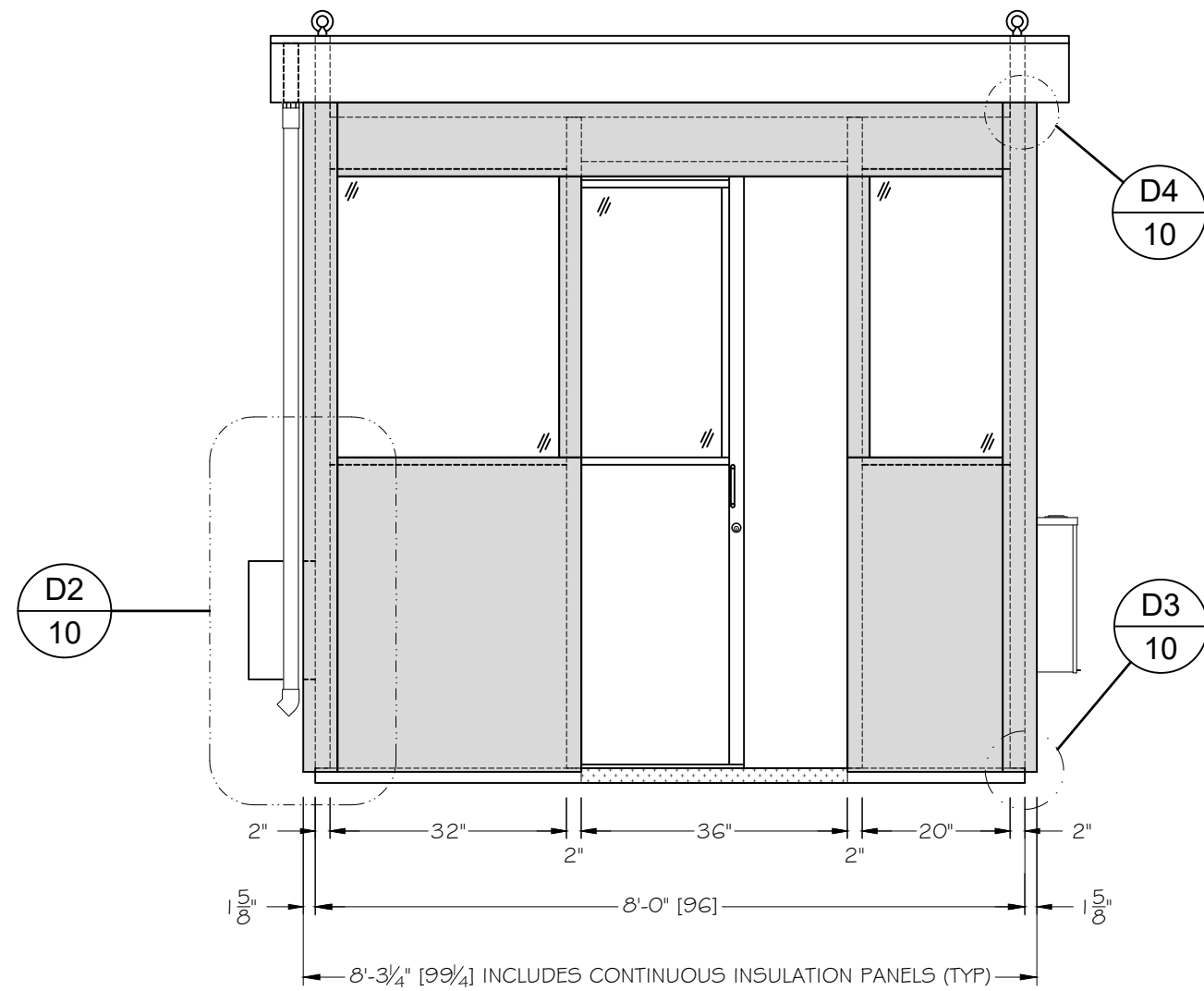


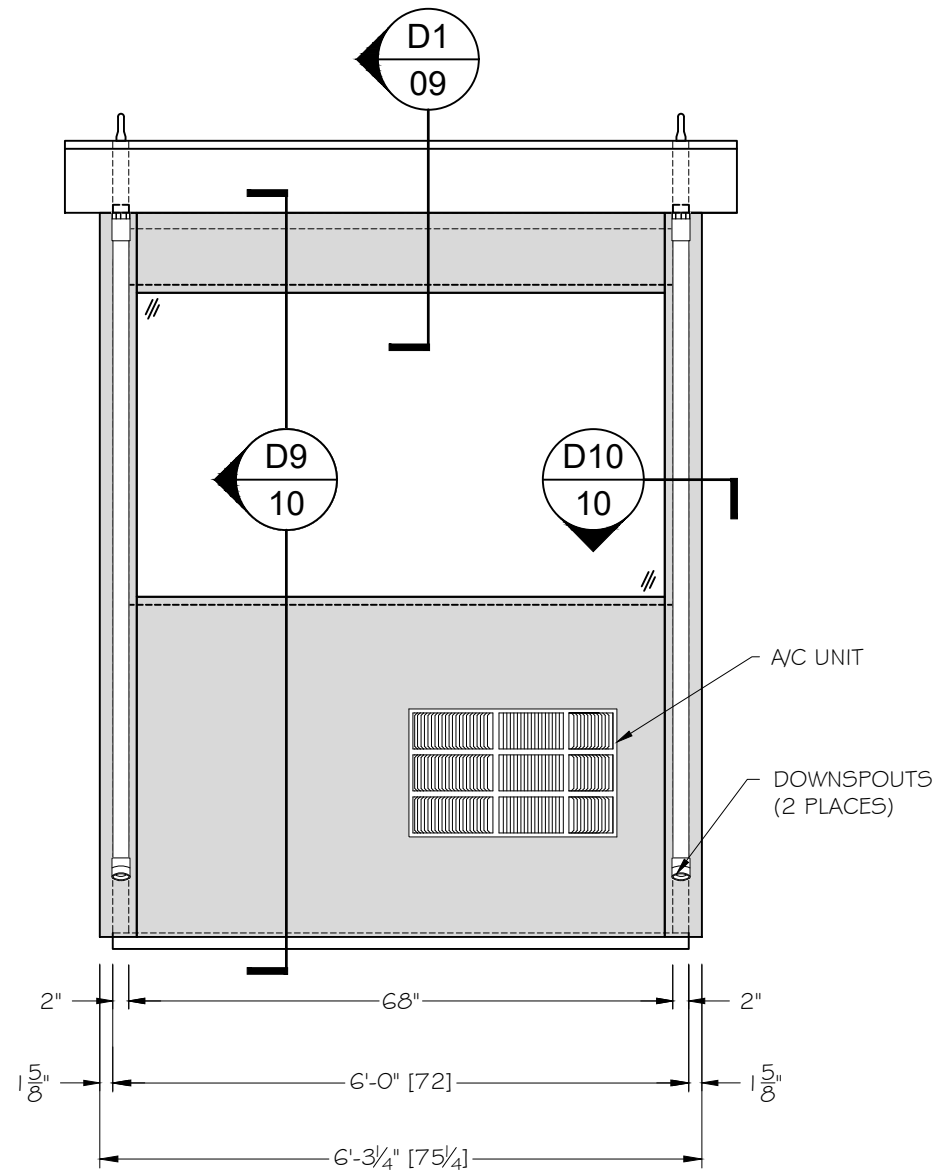
E1 LEFT ELEVATION
SCALE: 1/2" = 1'-0"



E2 FRONT ELEVATION
SCALE: 1/2" = 1'-0"



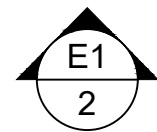
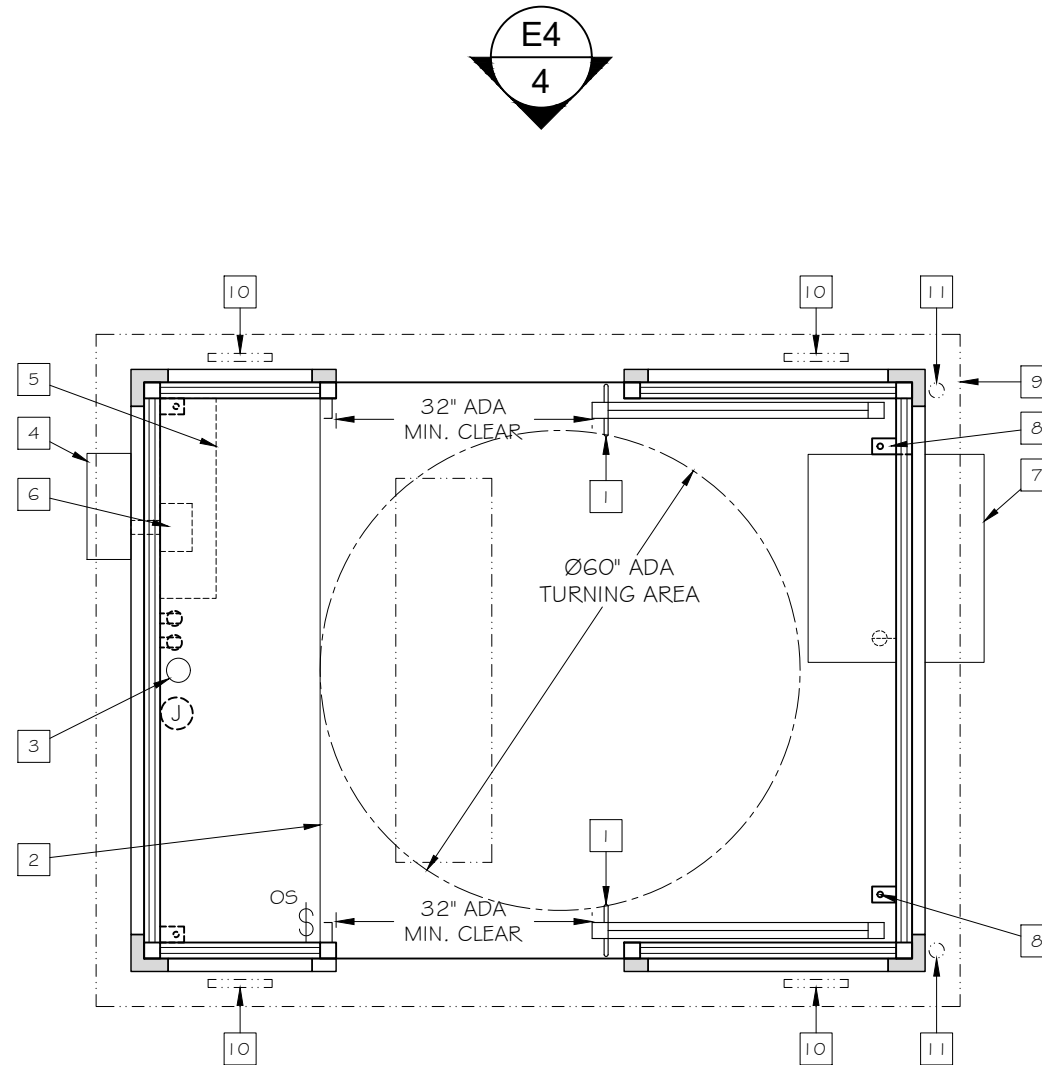
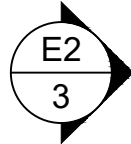
E3 FRONT ELEVATION
SCALE: 1/2" = 1'-0"



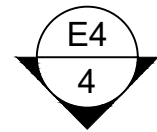
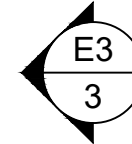
E4 REAR ELEVATION
SCALE: 1/2" = 1'-0"

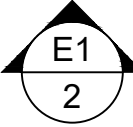
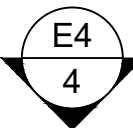
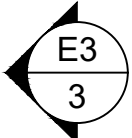
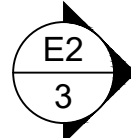
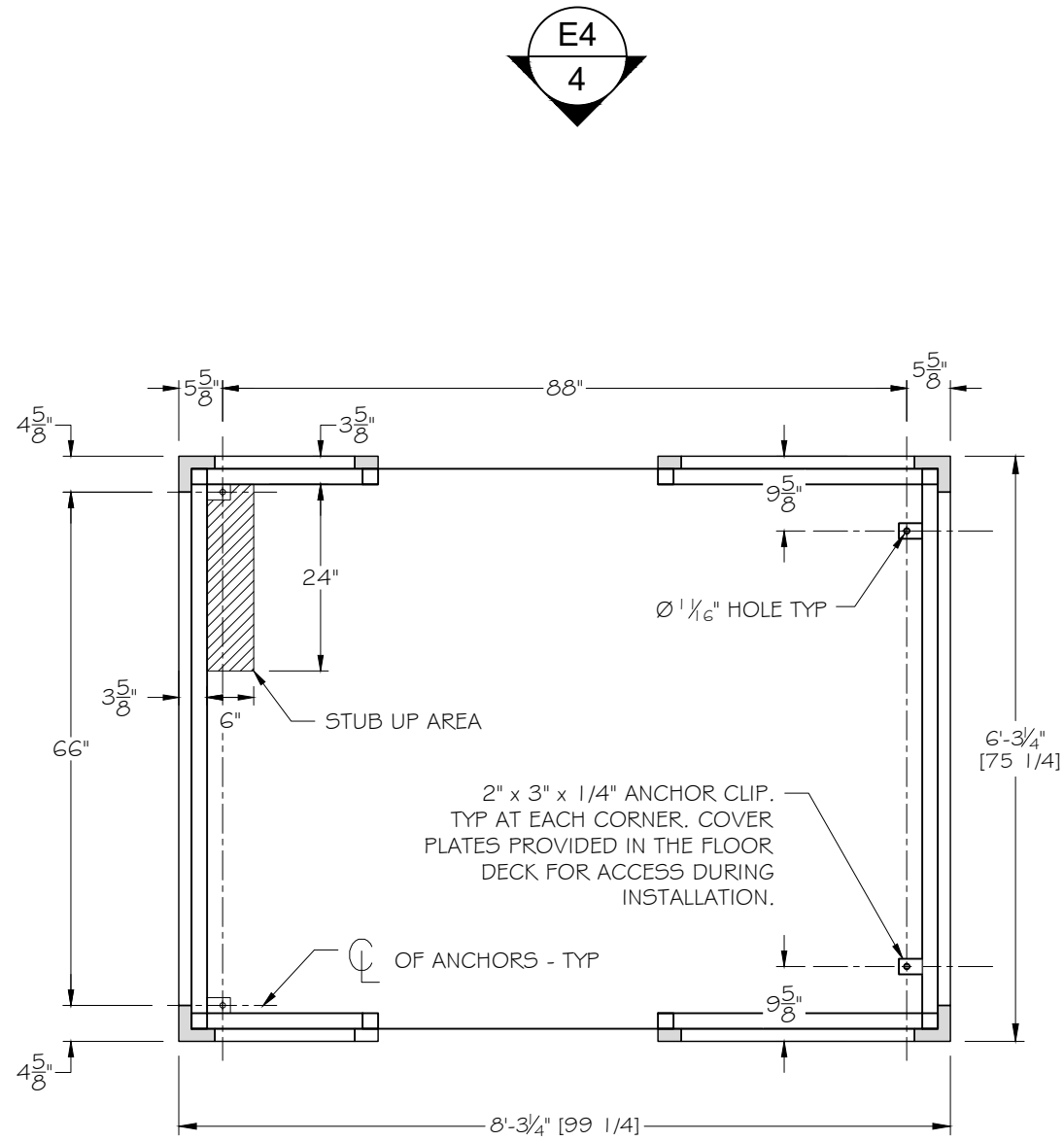
FLOOR PLAN LEGEND:

- 1 36" x 80" SLIDING DOORS - GENERAL NOTE D I
- 2 20" SHELF - GENERAL NOTE A I
- 3 3" Ø CORD ACCESS HOLE - GENERAL NOTE A I
- 4 LOAD CENTER - ELECTRICAL NOTE E I
- 5 ELECTRICAL CABINET - ELECTRICAL NOTE E I
- 6 6" x 6" POWER J-BOX - ELECTRICAL NOTE E I (a)
- 7 A/C UNIT - MECHANICAL NOTE M I
- 8 ANCHOR CLIP (4 PLACES) - GENERAL NOTE S5
- 9 OVERHANG - GENERAL NOTE R I
- 10 ATTIC VENT (4 PLACES) - GENERAL NOTE R I
- 11 DOWNSPOUT - GENERAL NOTE R I



FLOOR PLAN
SCALE: 1/2" = 1'-0"





 INDICATES OPENING THROUGH FLOOR

STUB AREA / ANCHOR PLAN

SCALE: 1/2" = 1'-0"



ELECTRICAL NOTES:

- E1. UNIT TO HAVE **ONE 4 WIRE THREE PHASE, 12 POLE, 125 AMP RATED, 120/208 VOLT LOAD CENTER (SUBJECT TO AVAILABILITY)** SURFACE MOUNTED ON THE EXTERIOR IN A LOCKABLE NEMA 3R ENCLOSURE.
 - A. UNIT TO HAVE A 6" x 6" x 4" JUNCTION BOX SURFACE MOUNTED ON THE INTERIOR FRONT WALL WITH A Ø1-1/2" NIPPLE THROUGH THE WALL INTO THE LOAD CENTER. FACTORY INSTALLED WIRING WILL RUN THROUGH THIS JUNCTION BOX.
- E2. ALL ELECTRICAL EQUIPMENT TO BE U.L. LISTED AND ALL WIRING TO BE PER CURRENT PUBLISHED NEC STANDARDS. ALL CONDUCTORS TO BE COPPER, WITH A MINIMUM SIZE OF THHN #12 SOLID COPPER. EXPOSED WIRING TO BE IN SURFACE MOUNTED EMT CONDUIT. CONCEALED WIRING TO BE IN FLEXIBLE ALUMINUM CONDUIT. FINAL POWER CONNECTION AND GROUNDING TO BE DONE ON SITE BY OTHERS. ALL WORK TO BE DONE BY A QUALIFIED ELECTRICIAN IN ACCORDANCE WITH ALL APPLICABLE LOCAL CODES.
 - A. ALL CIRCUITS TO BE GROUNDED.
 - B. ALL STEEL EQUIPMENT AND EXPOSED STRUCTURAL STEEL TO BE BONDED TO ELECTRICAL SYSTEM.
- E3. UNIT TO HAVE (2) 125V DUPLEX RECEPTACLES UNDER THE SHELF.
- E4. UNIT TO HAVE (1) DEDICATED A/C RECEPTACLE @ 208V.
- E5. UNIT TO HAVE (1) SINGLE GANG JUNCTION BOX UNDER THE FRONT SHELF, w/ A Ø1/2" CONDUIT RUN TO THE ELECTRICAL CABINET.
- E6. ALL EMPTY JUNCTION BOXES TO HAVE PULL STRINGS UNLESS NOTED OTHERWISE.
- E7. ITEMS OF A SIMILAR NATURE SHALL BE OF THE SAME TYPE AND MANUFACTURE.
- E8. ALL HEIGHT CALLOUTS TO BE MEASURED TO TOP OF RECEPTACLE/JUNCTION BOXES, UNLESS NOTED OTHERWISE.
- E9. ALL DETAILS, SECTIONS, AND NOTES SHOWN ON THE DRAWINGS ARE INTENDED TO BE TYPICAL AND SHALL APPLY TO SIMILAR SITUATIONS ELSEWHERE, UNLESS NOTED OTHERWISE. NOTES AND DETAILS ON THE DRAWINGS TAKE PRECEDENCE OVER THE GENERAL NOTES AND TYPICAL DETAILS.

MECHANICAL NOTES:

- M1. UNIT TO HAVE (1) THRU-WALL UNIT; EQUIPMENT TO BE A **GENERAL ELECTRIC MODEL AJEQ12DWH** (OR EQUAL).
 - A. A/C TO BE PLUG AND CORD CONNECTED, AND WILL HAVE A DEDICATED CIRCUIT FOR 208V.

PANEL SCHEDULE											
PANEL NAME: -			VOLTS: 120 / 208 V			MAIN TYPE: MAIN LUGS					
MOUNTING: FLUSH			WIRES: FOUR			BUS RATING: 125A					
ENCLOSURE: NEMA 3R			PHASE: THREE			MAIN BREAKER RATING: N/A					
CKT	DESCRIPTION	C.B. AMPS	C.B. POLES	A	B	C	C.B. POLES	C.B. AMPS	DESCRIPTION	CKT	
1	HVAC	25A	2	1411	20		1	20A	(1) LIGHTS	2	
3	HVAC					1411			360		
5	(2) DUPLEX RECEPTACLES	20A	1			360				6	
7										8	
9										10	
11										12	
		TOTAL PER LEG		1431	1771	360					
				TOTAL WATTS		3562					
				TOTAL x 1.25%		4452.5000					
				WATTS / $\sqrt{3} \times 208$		12.3589	AMPS				

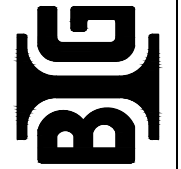
LIGHTING SCHEDULE						
TAG	DESCRIPTION	MANUFACTURER	MODEL NO.	TYPE	QTY	NOTES
⬠	1' x 4' FIXTURE	MAXLITE	MLFP14G420WC5	20W LED	1	OCCUPANCY SENSOR

MECHANICAL EQUIPMENT SCHEDULE							
TAG	DESCRIPTION	MANUFACTURER	MODEL NO.	BTU/h		SEER / HSPF RATING	NOTES
				COOL	HEAT		
Ⓐ	THRU-WALL UNIT	GENERAL ELEC.	AJEQ12DWH	11,800	8,600	9.6 / 9.7	@208V

SHEET 6 OF 11

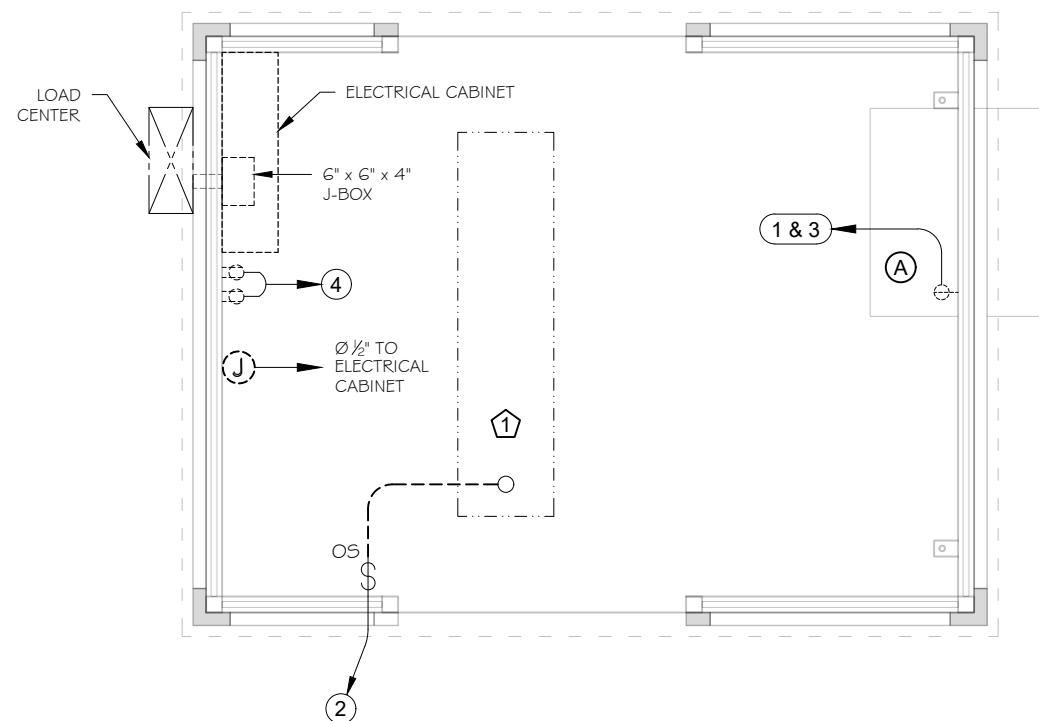
JOB No:11381
BY: JH Rev A : 26-JAN-23
DATE: 11-JAN-23 IFC
SCALE: AS NOTED

B.I.G. ENTERPRISES, INC.
9702 E. RUSH STREET
SOUTH EL MONTE, CA 91733-1730
(626) 448-1449



ELECTRICAL LEGEND

	125V DUPLEX RECEPTACLE		LOAD CENTER w/ PANEL NAME
	125V GFCI DUPLEX RCPT.		CIRCUIT NUMBER, LABEL DENOTES PANEL
	SINGLE POLE TOGGLE SWITCH		NUMBER DENOTES MTG. HEIGHT. ALL CONVENIENCE RECEPTACLES TO BE 20" A.F.F. UNLESS OTHERWISE NOTED
	OCCUPANCY SENSOR SWITCH (MANUAL ON/AUTO OFF)		CONDUIT, HOMERUN TO PANEL
	JUNCTION BOX, SINGLE GANG		SWITCH LEG
	AVC DEDICATED RECEPTACLE		LOW VOLTAGE CONDUIT w/ PULL STRINGS. ALL TO BE Ø 1/2" MINIMUM U.N.O.



ELECTRICAL PLAN

SCALE: 1/2" = 1'-0"

B.I.G. ENTERPRISES™

THESE PLANS, DRAWINGS, AND/OR CAD FILES ARE THE COPYRIGHTED WORK OF B.I.G. ENTERPRISES AND IS A TRADEMARK OF B.I.G. ENTERPRISES. COPYING OR UNAUTHORIZED USE OF THESE DESIGNS OR ITS LIKENESS WILL BE PROSECUTED TO THE MAXIMUM EXTENT PERMITTED UNDER APPLICABLE STATE AND FEDERAL LAW. © B.I.G. ENTERPRISES 1988 ALL RIGHTS RESERVED

10 FEBRUARY 2023

SHEET 7 OF 11

JOB No: 11381
 BY: JH Rev. A : 26-JAN-23
 DATE: 11-JAN-23 IFC
 SCALE: AS NOTED

B.I.G. ENTERPRISES, INC.
 9702 E. RUSH STREET
 SOUTH EL MONTE, CA 91733-1730
 (626) 448-1449



GENERAL NOTES:

STRUCTURAL:

- S1. Frame work to be 2" x 2 x .083" # 2" x 3" x .083" steel tube.
- S2. Unit to have half glazed 16 ga galvanized interior and exterior steel walls.
- S3. The walls to have an **EXOMAXci FR R-9.6 thermal insulation** plus an additional layer of continuous **EXOMAXci FR R-9.6 thermal insulation** encapsulated in an exterior 16 ga galvanized steel wall. Overall insulation value is R-19.2.
- S4. Unit to have a 12 ga galvanized steel floor covered with 1/4" thick x 20" square, black commercial polyvinyl chloride interlocking tiles with a 4" high black perimeter cove molding. Floor to be mounted on a 2" tall galvanized steel tube frame.
 - A. Floor will require a ramp the full width of one door opening with a slope of 1" to 1'-0" to meet ADA handicap access requirements (ramp by others onsite) or alternatively the booth can be recessed 2" into the slab.

CAUTION: Please contact your sales representative for additional information when planning on recessing the booth into the slab.

- S5. Unit to have four interior steel anchor clips. Four 5/8" Hilti KB-TZ bolts (LARR25701, ICC-ESR-1917) with 3 1/8" minimum embedment in 2500 psi concrete (or equal) are required for placement of booth. (Anchor bolts are not included) Concrete to be level if sloped, slope towards drain opening(s) on booth. Concrete, bolts and mounting shall be by others. For a 3-1/8" embedment the foundation/slab design must be a minimum of 5" thick and be sized to allow for a minimum distance of 6-1/2" from the edge of the slab to the center line of the anchors for maximum strength.

ROOF:

- R1. Unit to have an 8" tall fascia, with 6" overhang and a flat 16ga galvanized steel roof with 1" drip angles on four sides designed to drain through two rear mount Ø1-1/2" PVC downspouts.
- R2. Roof to have **FIBERGLASS BATT INSULATION with R-19** insulation value.
- R3. Unit to have four removable lifting eyes (3/4" dia. shank, eye is 1-1/2" I.D.) mounted on the roof. Lifting eyes are designed for a STRAIGHT VERTICAL LIFT ONLY. Spreader bars must be used when lifting booth to ensure this vertical lift. All warranties will be void if not lifted in this manner.

DOORS & WINDOWS:

- D1. Unit to have two commercial grade steel framed slide doors, 36" x 80" constructed of 16 ga steel panels with steel tube frames. Doors to be top hung, in a steel track, on a minimum of eight 2 1/4" steel ball bearing rollers with stainless steel lower guide, mortise hook type lock and complete weather stripping.
 - A. Doors to be keyed alike.
- W1. Unit to have **3/4" tinted** tempered dual pane insulating glass with Low-E coating.
 - A. Customer to specify the color of tint prior to B.I.G. production release. Standard tint colors are Bronze or Gray.
 - B. If customer does not provide a tint selection, B.I.G. will choose a standard tint color that best complements the paint color selected.

ACCESSORIES:

- A1. Unit to have one 20" deep straight steel shelf, with one Ø3" electric access hole with grommet insert for drop down cords. Shelf to be painted same color as the booth interior and mounted at 34" above finished floor.
- A2. Shelf to be rated for a 250 lb. load.

WEATHERPROOFING & FINISH:

- F1. Unit to have a 16 ga galvanized steel ceiling mounted at 90" A.F.F. The ceiling is to be painted to match the building interior.
- F2. All exposed steel surfaces except roof deck to be coated with two component high solids polyurethane rust inhibitive primer, and two component high solids polyurethane finish coat.
- F3. **Unit to be painted Cardtex Beige, inside and out, per Customer selection.**
- F4. Roof to be fully weather sealed with a three step elastomeric membrane as follows:
 - A. All seams are sealed with a high bond seam sealing tape.
 - B. The entire roof deck is then coated with a liquid applied one-part polyurethane coating forming a tough waterproof, weather-resistant elastomeric coating.
 - C. The entire deck surface finished with a white heat reflective polyurethane coating. The coating meets Energy Star reflectance and emissivity performance requirements, has an SRI of 95, and is approved by the Cool Roof Rating Council (CRRC).

SHEET
11
OF
11

JOB No: 11381
BY: JH Rev A : 26-JAN-23
DATE: 11-JAN-23 IFC
SCALE: AS NOTED

B.I.G. ENTERPRISES, INC.
9702 E. RUSH STREET
SOUTH EL MONTE, CA 91733-1730
(626) 448-1449

